



jordan fishwick

WEST DIDSBURY
Queenston Road



Queenston Road, West Didsbury, M20 2WZ

Offers Over £285,000



The Property

A stylish and spacious, TWO DOUBLE BEDROOM, first floor apartment offering well planned living space extending over 700 sqft, coupled with an EXCELLENT LOCATION IN WEST DIDSBURY. The accommodation benefits from both gas central heating and private residents parking, in outline comprising:- Communal entrance hall, L-shaped private entrance hall, generous lounge/dining room extending over 20 ft with bay window, modern fitted kitchen, master bedroom with French doors leading to a private balcony enjoying a south-westerly aspect and fitted wardrobes, additional second double bedroom and a bathroom fitted with a lovely contemporary white suite. Suitable for a number of purchasers, including the first time buyer or the buy to let landlord, the property also is well placed for transport links with the Metrolink only a short walk and Manchester Airport/motorways being close by.

Directions

M20 2WZ



- Spacious first floor apartment
- Stylish living space
- Two double bedrooms
- Gas central heating
- Balcony to master bedroom
- Living room extending over 20ft
- Modern fitted kitchen & bathroom
- Residents parking
- Generous L-shaped entrance hall
- Excellent location

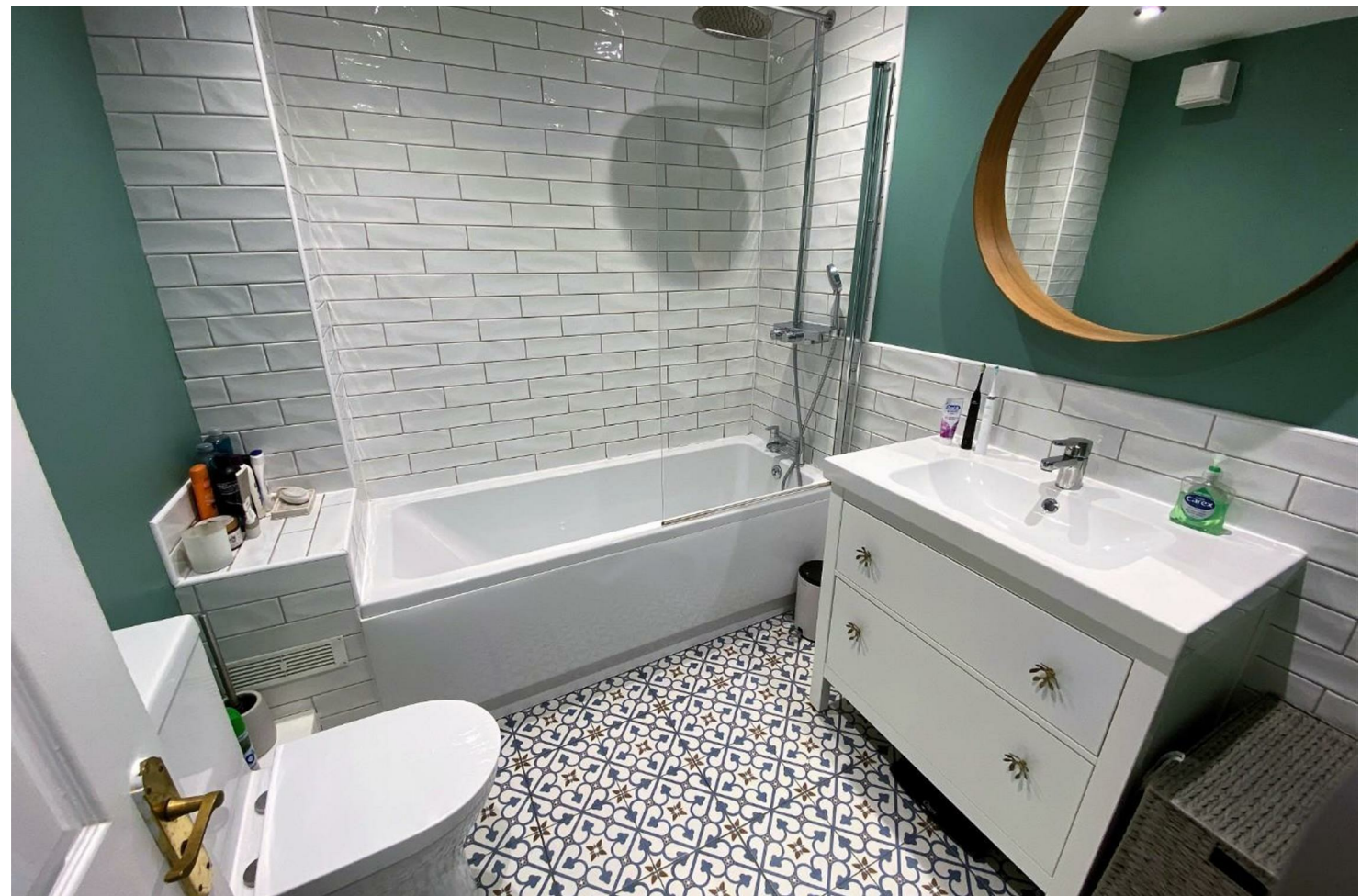
Postcode - M20 2WZ

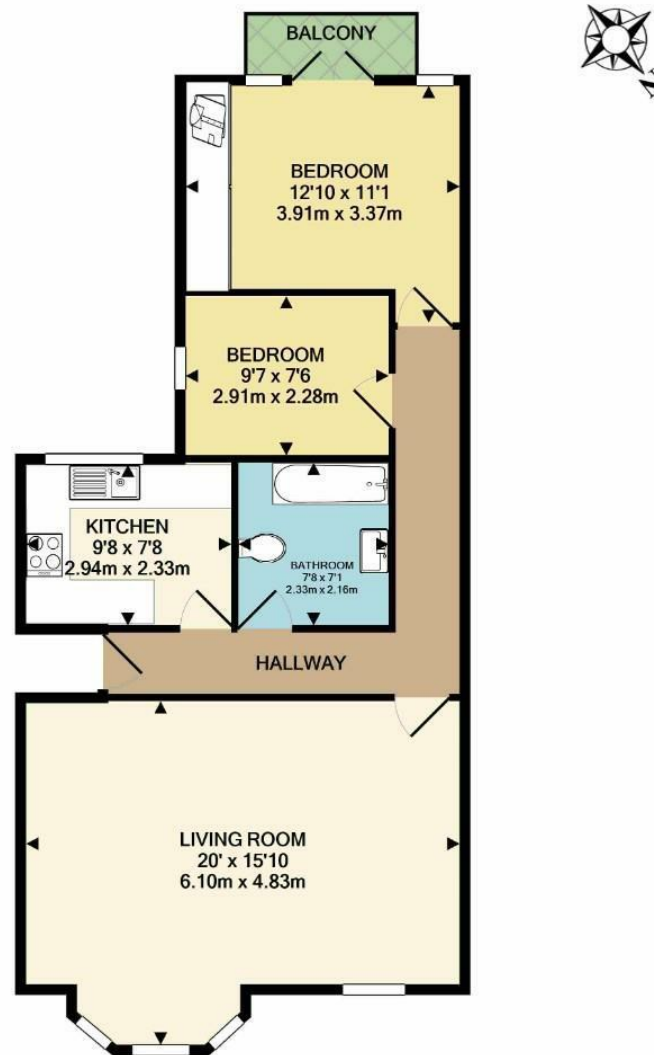
EPC Rating - B

Floor Area - 703.00 sq ft

Local Authority - Manchester City Council

Council Tax - B





TOTAL APPROX. FLOOR AREA 703 SQ.FT. (65.3 SQ.M.)
 Measurements are approximate. Not to scale. Illustrative purposes only
 Made with Metropix ©2022



These particulars are believed to be accurate but they are not guaranteed and do not form a contract. Neither Jordan Fishwick nor the vendor or lessor accept any responsibility in respect of these particulars, which are not intended to be statements or representations of fact and any intending purchaser or lessee must satisfy himself by inspection or otherwise as to the correctness of each of the statements contained in these particulars. Any floorplans on this brochure are for illustrative purposes only and are not necessarily to scale.

Offices also at: Wilmslow, Macclesfield, Hale, Sale, Chorlton, Glossop, Manchester & Salford

757-759 Wilmslow Road, Didsbury Village, Manchester

0161 445 4480

didsbury@jordanfishwick.co.uk
www.jordanfishwick.co.uk